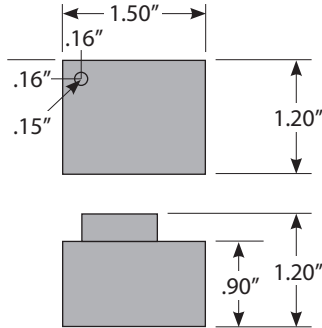
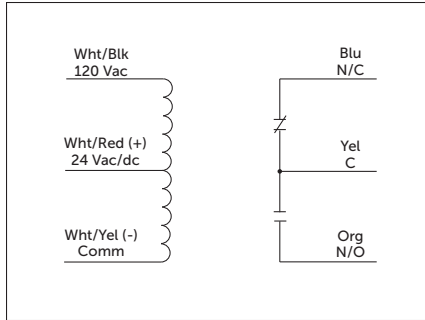


## PAM SERIES MULTI-VOLTAGE RELAY MODULES

### SSU-PAM-1

Relay 10 Amp SPDT, 24Vac/dc or 120Vac



UUKL LISTED



### SPECIFICATIONS

**# Relays & Contact Type:** One (1) SPDT Continuous Duty Coil  
**Expected Relay Life:** 10 million cycles minimum mechanical  
**Operating Temperature:** -30 to 104° F  
**Humidity Range:** 5 to 95% (noncondensing)  
**Operate Time:** 8ms  
**Relay Status:** LED On = Activated  
**Dimensions:** 1.5"H x 1.2"W x 1.2"D  
**Origin:** Made of US and non-US parts  
**Wires:** 12", 600V Rated  
**Gold Flash:** No  
**Override Switch:** No  
**Polarized:** For use on supervised circuits

**Contact Ratings:**  
 10 Amp General Use @ 120 Vac  
 10 Amp Resistive @ 30 Vdc (N/O)  
 7 Amp Resistive @ 30 Vdc (N/C)  
 1/2 HP @ 120 Vac  
 C300 Pilot Duty

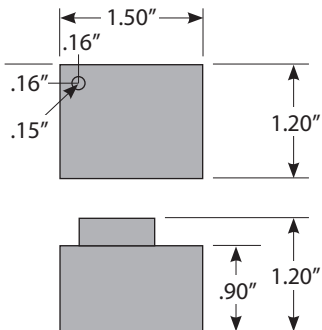
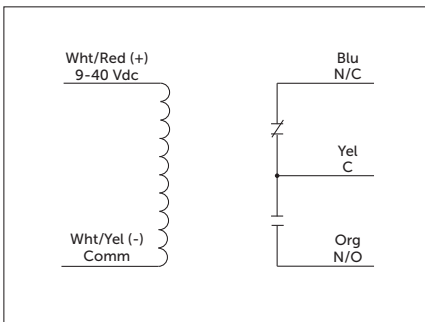
**Coil Current:**  
 20 mA @ 24 Vdc  
 50 mA @ 24 Vac, 50-60 Hz  
 30 mA @ 120 Vac, 50-60 Hz

**Coil Voltage Input:**  
 24 Vac/dc ; 120 Vac ; 50-60 Hz  
 Drop Out = 10 Vac / 10 Vdc  
 Pull In = 16 Vac / 18 Vdc

**Approvals:**  
 UL Listed, UL864, UUKL  
 C-UL Canada, CE, RoHS  
 California State Fire Marshal

### SSU-PAM-2

Relay 10 Amp SPDT, 9-40 Vdc



UUKL LISTED



### SPECIFICATIONS

**# Relays & Contact Type:** One (1) SPDT Continuous Duty Coil  
**Expected Relay Life:** 10 million cycles minimum mechanical  
**Operating Temperature:** -30 to 104° F  
**Humidity Range:** 5 to 95% (noncondensing)  
**Operate Time:** 20ms  
**Relay Status:** LED On = Activated  
**Dimensions:** 1.5"H x 1.2"W x 1.2"D  
**Origin:** Made of US and non-US parts  
**Wires:** 12", 600V Rated  
**Gold Flash:** No  
**Override Switch:** No  
**Polarized:** For use on supervised circuits

**Contact Ratings:**  
 10 Amp Resistive @ 120 Vac  
 10 Amp Resistive @ 28 Vdc  
 1/3 HP @ 120 Vac (N/O)  
 480 VA Pilot Duty @ 120 Vac

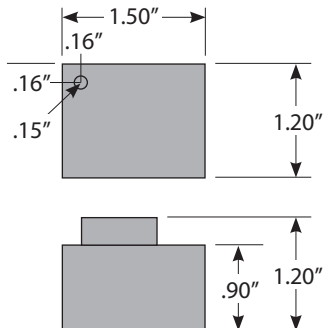
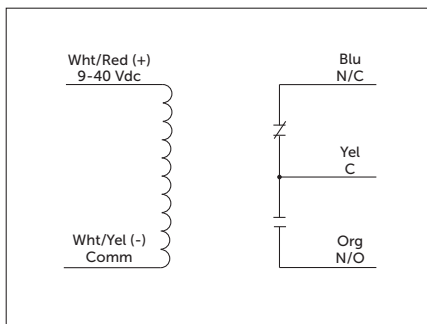
**Coil Current:**  
 20 mA @ 9-40 Vdc

**Coil Voltage Input:**  
 9-40 Vdc ; 50-60 Hz  
 Drop Out = 2 Vdc  
 Pull In = 9 Vdc

**Approvals:**  
 UL Listed, UL864, UUKL  
 C-UL Canada, CE, RoHS  
 California State Fire Marshal

## SSU-PAM-4

Relay 10 Amp SPDT, 9-40 Vdc



UUKL LISTED



### SPECIFICATIONS

**# Relays & Contact Type:** One (1) SPDT Continuous Duty Coil 10  
**Expected Relay Life:** million cycles minimum mechanical  
**Operating Temperature:** -30 to 104° F  
**Humidity Range:** 5 to 95% (noncondensing)  
**Operate Time:** 20ms  
**Relay Status:** LED On = Activated  
**Dimensions:** 1.5"H x 1.2"W x 1.2"D  
**Origin:** Made of US and non-US parts  
**Wires:** 12", 600V Rated  
**Gold Flash:** No  
**Override Switch:** No  
**Polarized:** For use on supervised circuits

**Contact Ratings:**  
 10 Amp Resistive @ 120 Vac  
 10 Amp Resistive @ 28 Vdc  
 1/3 HP @ 120 Vac (N/O)  
 480 VA Pilot Duty @ 120 Vac

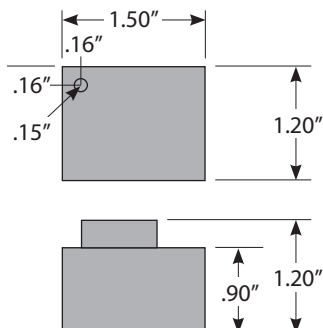
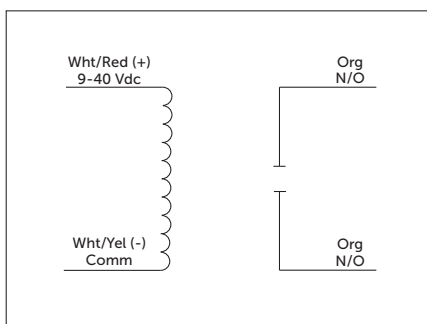
**Coil Current:**  
 20 mA @ 9-40 Vdc

**Coil Voltage Input:**  
 9-40 Vdc ; 50-60 Hz  
 Drop Out = 2 Vdc  
 Pull In = 9 Vdc

**Approvals:**  
 UL Listed, UL864, UUKL  
 C-UL Canada, CE, RoHS  
 California State Fire Marshal

## SSU-PAM-EOLR

Relay 10 Amp SPST, 9-40 Vdc



UUKL LISTED



### SPECIFICATIONS

**# Relays & Contact Type:** One (1) SPST Continuous Duty Coil  
**Expected Relay Life:** 10 million cycles minimum mechanical  
**Operating Temperature:** -30 to 104° F  
**Humidity Range:** 5 to 95% (noncondensing)  
**Operate Time:** 20ms  
**Relay Status:** LED On = Activated  
**Dimensions:** 1.5"H x 1.2"W x 1.2"D  
**Origin:** Made of US and non-US parts  
**Wires:** 12", 600V Rated  
**Gold Flash:** No  
**Override Switch:** No  
**Polarized:** For use on supervised circuits

**Contact Ratings:**  
 10 Amp Resistive @ 120 Vac  
 10 Amp Resistive @ 28 Vdc  
 1/3 HP @ 120 Vac (N/O)  
 480 VA Pilot Duty @ 120 Vac

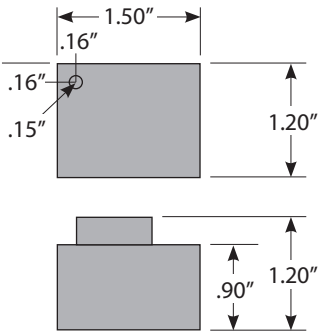
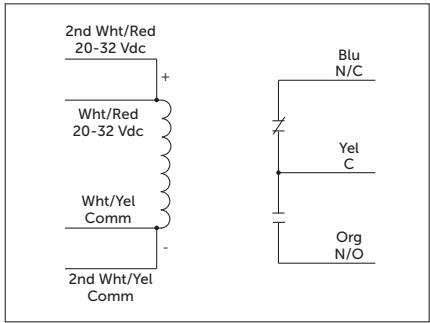
**Coil Current:**  
 20 mA @ 9-40 Vdc

**Coil Voltage Input:**  
 9-40 Vdc ; 50-60 Hz  
 Drop Out = 2 Vdc  
 Pull In = 9 Vdc

**Approvals:**  
 UL Listed, UL864, UUKL  
 C-UL Canada, CE, RoHS  
 California State Fire Marshal

SSU-PAM-SD

Relay 10 Amp SPDT, 20-32 Vdc



SPECIFICATIONS

# Relays & Contact Type:	One (1) SPDT Continuous Duty Coil	Contact Ratings:	10 Amp General Use @ 120 Vac 10 Amp Resistive @ 30 Vdc (N/O) 7 Amp Resistive @ 30 Vdc (N/C) 1/2 HP @ 120 Vac C300 Pilot Duty	Coil Voltage Input:	20-32 Vdc ; 50-60 Hz Drop Out = 9 Vdc Pull In = 16 Vdc
Expected Relay Life:	10 million cycles minimum mechanical			Approvals:	UL Listed, UL864, UUKL C-UL Canada, CE, RoHS California State Fire Marshal
Operating Temperature:	-30 to 104° F	Coil Current:	21 mA @ 20-32 Vdc		
Humidity Range: Operate	5 to 95% (noncondensing)				
Time:	8ms				
Relay Status:	LED On = Activated				
Dimensions:	1.5"H x 1.2"W x 1.2"D				
Origin:	Made of US and non-US parts				
Wires:	12", 600V Rated				
Gold Flash:	No				
Override Switch:	No				
Polarized:	For use on supervised circuits				

SSU-PAM SERIES SELECTION GUIDE				
MODEL#	COIL VOLTAGE	COIL CURRENT	CONTACT CONFIGURATION	WIRE LEADS
SSU-PAM-1	24 Vac 24 Vdc 120 Vac	20mA @ 24 Vdc 50mA @ 24 Vac 30mA @ 120 Vac	SPDT	6 "Flying" Leads
SSU-PAM-2	9-40 Vdc	20mA	SPDT	5 "Flying" Leads
SSU-PAM-4	9-40 Vdc	20mA	SPDT	5 "Flying" Leads
SSU-PAM-EOLR	9-40 Vdc	20mA	SPST	4 "Flying" Leads
SSU-PAM-SD	20-32 Vdc	21mA	SPDT	7 "Flying" Leads